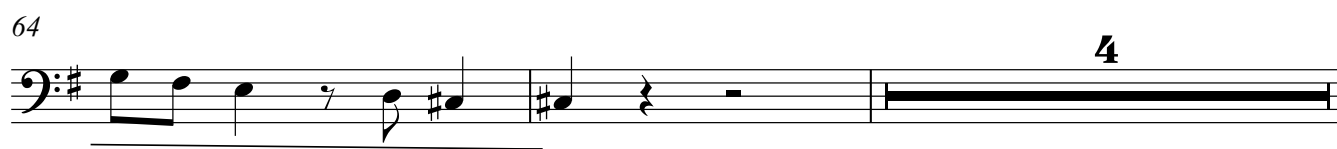
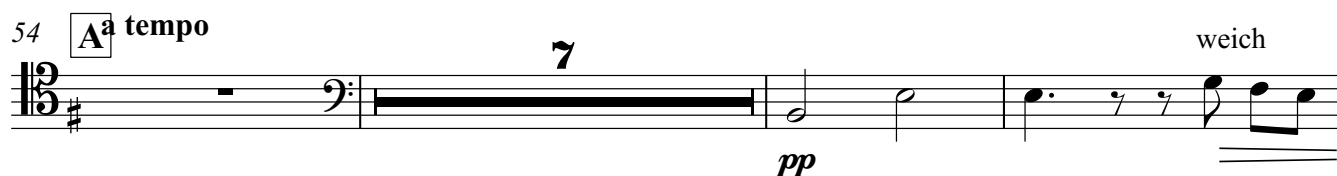
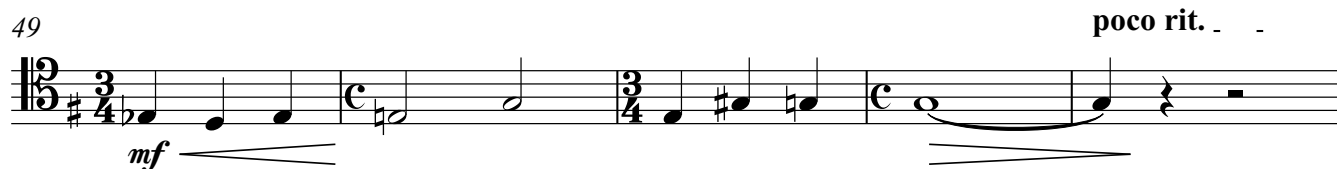
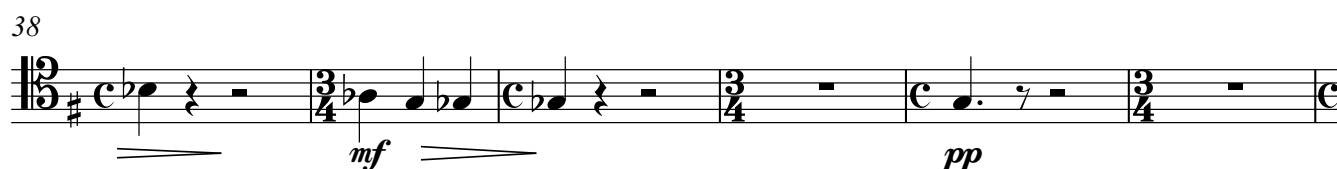
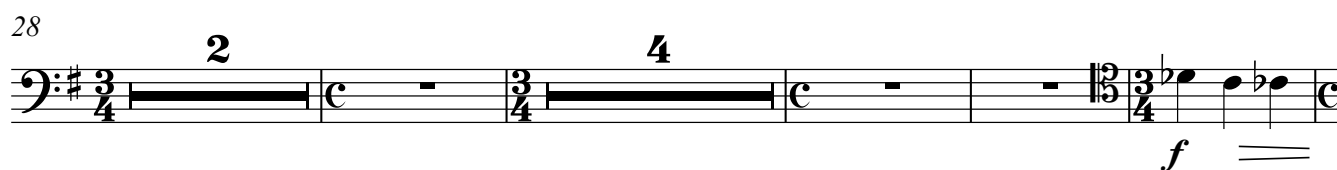
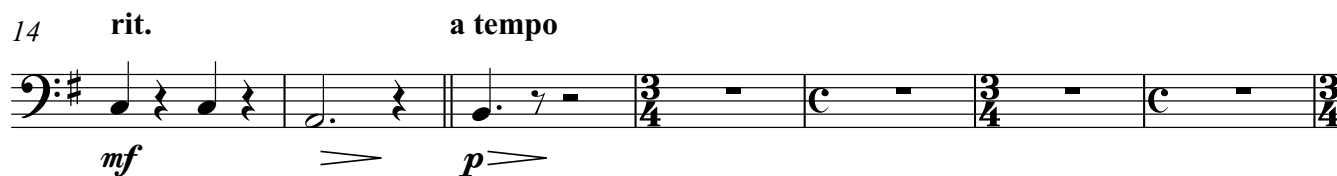


Posaune 2

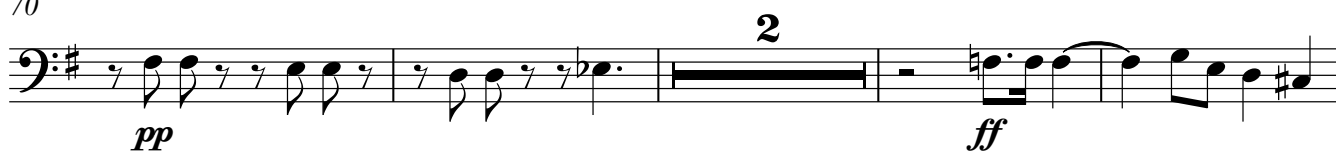
# 1. Sinfonie (1986)

Friedrich Radermacher

**Allegro**  
♩ = 120



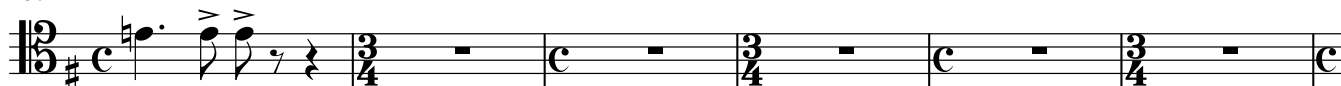
70



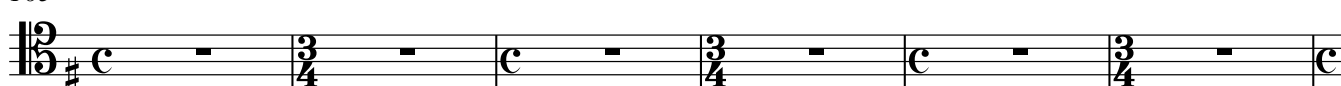
153



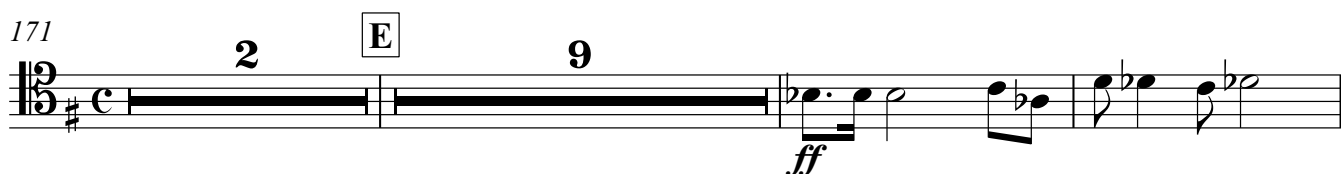
159



165



171

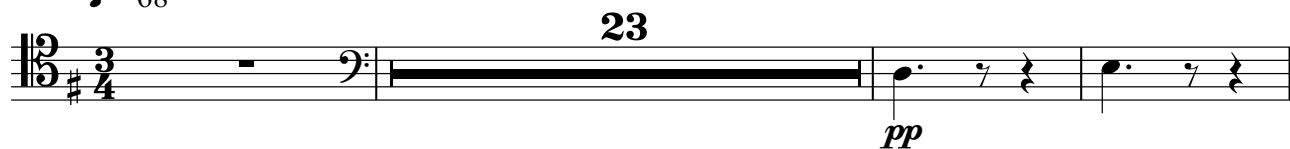


184



## 2. Satz

Poco adagio  
♩ = 68



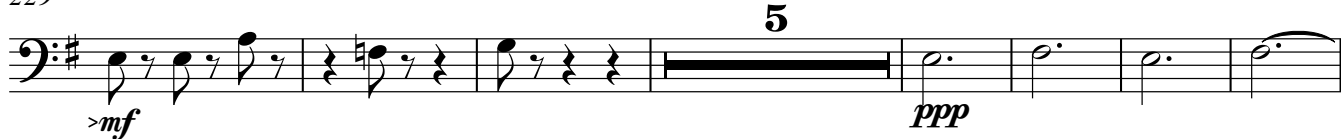
215



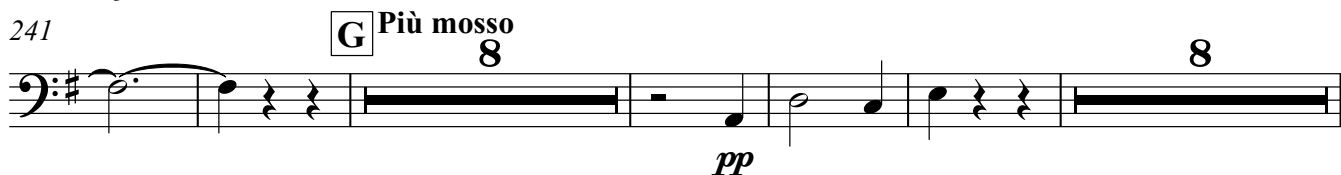
221



229



241



345 1. weich e molto espr.

*pp*

## Allegro moderato

♩ = 138

4 6 7

*p*

15

*mf* *p*

21 **J** 10

*pp* *f*

35 6 con sord. 2

*f* 3 3

46 senza sord. **K** 5 3 3 2

*ff*

56 10

*pp* *f*

69 2 senza sord. 3 3

*ff*

75 **L** 5 con sord. 2 2 2 2

*pp*

85 11

98 9

*p*

110 **M** senza sord.

*p* *mf*

117

*mf*

125

*f*

137 **N**

*pp*

160 con sord.

*pp* *f*

174 senza sord. rit.

*ff*

## 4.Satz

Adagio  $\text{♩} = 72$

*ppp*

201 a tempo

*pp*

232 rit.

*ppp*

## 5. Satz

Allegro con brio  
♩ = 140

4 *f* 8 *f*

16 *p* 10

30 **O** 4 *pp*

38 con sord. 10 *f*

52 **P** senza sord. *p* 2

59 *mf* 2 *f*

66 con sord. *p* *ff* *mf*

73 *ff* 2

80 2 **Q** 5 senza sord. *pp*

91 *f* *p* 3

98 *con sord.*  
*f molto vibrato* *pp* **4**

106 **R** **7** *senza sord.*  
*f* *ff*

116 **10**  
*p*

130 **S** **18** *con sord.*  
*f* *f*

152 **4** *senza sord.* **T**  
*f* *f*

161 **8**  
*ff*

173  
*fff*

179  
*f* *ff*

186

190